

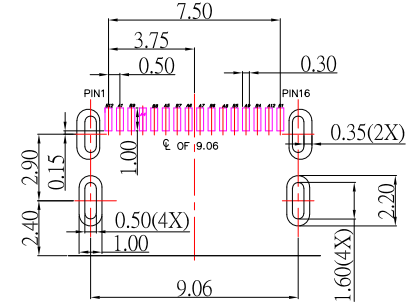
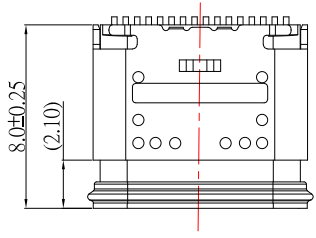
IP68



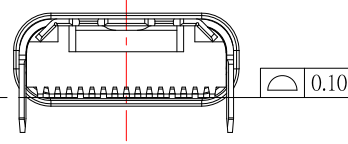
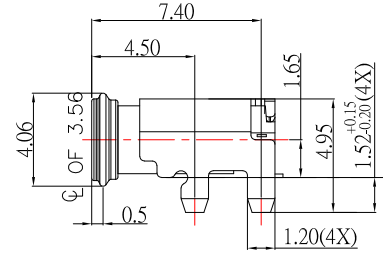
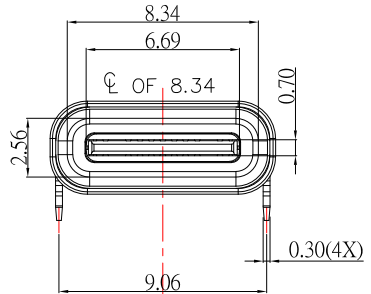
SBC-WP160S7-20x-S410

鍍層厚度:

Blank : 1u"
2 : 15u"
3 : 30u"



PCB LAYOUT



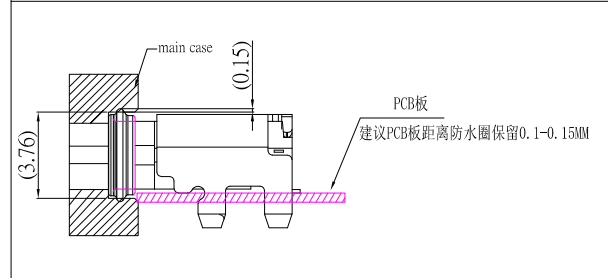
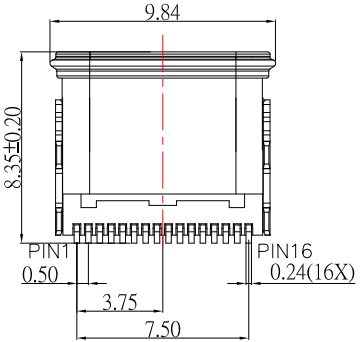
SPECIFICATIONS

- Electrical:**
- 1.Rating: 5.0 A
 - 2.Contact Resistance: 40 mΩ Max
 - 3.Insulation Resistance: 100 MΩ Min
 - 4.Dielectric Withstand Voltage: 100V AC

- Mechanical:**
- 1.Connector Mate and Unmate Force
 - 1.1 Mate force: 5~20 N
 - 1.2 Unmate force: 8~20 N

- Material:**
- 1.Housing: PA46
 - 2.Contact: C7025
 - 3.Shell: SUS
 - 4.O-ring: Silcone

- Finish:**
- 1.Contact: Plated Gold in Mating Area ;
Gold Plated on Solder Balls ;
Nickel under plated overall
 - 2.Shell: Nickel under Plated surface layer



Pin	Signal	Description	Mating Sequence	Description	Signal	Pin		
2	A1	GND	Ground return	First	Ground return	GND	B12	1
7	A2	TX1+	/	Second	/	RX1+	B11	/
7	A3	TX1-	/	Second	/	RX1-	B10	/
4	A4	VBUS	Bus Power	First	Bus Power	VBUS	B9	3
6	A5	CC1	Configuration Channel	Second	Sideband Use(SBU)	SR12	B8	5
8	A6	D+	Positive half of the USB 2.0 differential pair-Position 1	Second	Negative half of the USB 2.0 differential pair-Position 2	D-	B7	7
9	A7	D-	Negative half of the USB 2.0 differential pair-Position 1	Second	Positive half of the USB 2.0 differential pair-Position 2	D+	B6	10
11	A8	SBU1	Sideband Use(SBU)	Second	Configuration Channel	CC2	B5	12
13	A9	VBUS	Bus Power	First	Bus Power	VBUS	B4	14
/	A10	RX2-	/	Second	/	TX2-	B3	/
/	A11	RX2+	/	Second	/	TX2+	B2	/
15	A12	GND	Ground return	First	Ground return	GND	B1	16

1	新增PCB LAYOUT尺寸	Jack	083024
ITEM NO.	DESCRIPTION	DRAWN	DATE

CONTACT 建倚科技股份有限公司
CONTACT TECHNOLOGY CORP.

TOLERANCE UNLESS OTHERWISE STATED :
Up to 5 ±0.2
Above 5 ~ 15 ±0.3
Above 15 ~ 30 ±0.4
Above 30 ~ 50 ±0.5
Angle ±0.3

3RD. ANGEL'S

UNITS MM

DRAWN BY:	DATE	MAT'L	TITLE	CONNECTOR
Jack Lu	08/30/24	FINISH	MODLE	USB C TYPE 2.0 Female CH1.65防水型IP68
CHECKED BY:	DATE	SCALE	DWG NO.	SBC-WP160S7-20x-S410
Jacky Chen	08/30/24	1 : 1	PART NO.	SBC-WP160S7-20x-S410
APPROVED BY:	DATE	SHEET NO.	1 of 1	
Tony Kao	08/30/24			